



VOL 68 NO 1

JAN/FEB 2011

## CTAUN returns to NYC, 8



Photo courtesy of Photographs by Jim

## Start plans for attending a Regional Conference

■ Choose a conference.  
Pack your bags, 6

## Order the 2010 Constitution and International Standing Rules

“Finally!” sighed the women working to complete the *Constitution and International Standing Rules*. The governing documents are

available from Society Headquarters, downloadable on the Society Web site and listed for Kindle on Amazon.com.

Spiral-bound copies are \$3 each, \$12 for 5, \$20 for 10, and \$55 for 30. Order online or call now. Copies will also be available at all regional conferences this summer.

Downloads are free. A Kindle version can be purchased for \$2.

“This document has been read so many times by so many groups, I didn’t think I could find another item when it was formatted; but I did,” Dr. Jensi Souders, TN, international president, said. Parliamentarian Jean Gray, MD, made corrections for motions during the convention general sessions. This version was then cross

checked with the court reporters’ transcripts. Questions from members about some motions’ final wording raised clarity issues to be solved.

The Constitution Committee read the documents one line at a time, looking at punctuation, capitalization, consistency and clarity. More corrections were made and checked. “Once formatted for printing, the document had another review; and we found a few more items,” Corlea Plowman, TX, executive director, said.

“From commas to abbreviations and numbering, we scrutinized the document again,” Souders added. “We have worked very hard to make this product perfect.”

State organizations can begin to update their bylaws and standing rules and submit them to the Constitution Committee for review and assistance. A check list of items to cover is available on the Web site. The committee will hold workshops at the regional conferences.

### INTERNATIONAL ▪ REGIONALS

## Regional conference focus topics grab participant interest

Regional Conference special focus topics:

- ♦ Bullying,
- ♦ Diversity,
- ♦ Mentoring all ages,
- ♦ Managing students with special difficulties,
- ♦ Education in the digital arena

From special focus topics to workshops to keynote speakers, regional directors are planning excellent programs for regional conference participants.

*Constitution Article X, Section C, 2b: Regional conferences are held to disseminate information regarding Society activities and to provide educational workshops and leadership training.*

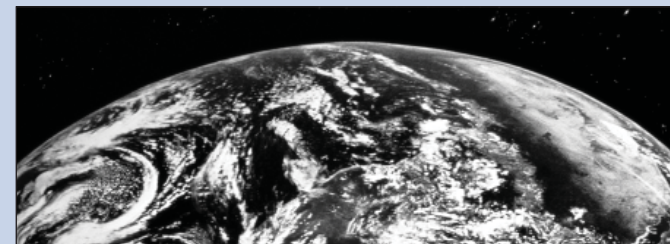
Pre-Conference activities will begin Monday evening. Leadership development for the presidents and executive secretaries will continue Tuesday and Wednesday.

See **REGIONALS**, 6

 INTERNATIONAL SOCIETY FOR KEY WOMEN EDUCATORS

**Delta Kappa Gamma** promotes professional and personal growth of women educators and excellence in education.

Visit our Web site at [www.dkg.org](http://www.dkg.org) for the latest news and information



## Have you been beyond Jack's Creek?

By Dr. Jensi P. Souders

2010-2012 INTERNATIONAL PRESIDENT

*A city fellow found himself lost in the back woods of the Appalachian Mountains with his car low on fuel. He crept along a seemingly deserted dirt road. Suddenly he came upon a log cabin with an elderly man smoking a pipe in a rocking chair on the front porch. The stranger stopped, got out of his vehicle, walked to the porch and asked how far it was to the next town. The elderly man said, "If'n you keep to this road fer about 20 minutes, you'll come to Jack's Creek." The stranger asked if there were a fuel station at Jack's Creek. "Well, no," said the elderly man, "There ain't nothin' there but a general store." The stranger then asked how far beyond Jack's Creek it was to a fuel station. "Don't know," said the mountain man, "I ain't never been beyond Jack's Creek."*

As we strive to strengthen chapters by retaining members and encouraging strong chapter leadership, the above story my father often told came to my mind. Stagnating or struggling chapters are often characterized by the following "symptoms":

- Chapter members like things the way they've "always been" and are reluctant to make change;
- Chapter leadership is faltering, as few are willing to accept leadership responsibilities;
- No new members have been initiated in one or more years;
- New members drop out within three years;
- A majority of the chapter is retired and members say they don't know where to find new members;
- Chapter members have not attended a Society event

outside the chapter in two or more years;

- Members don't keep up with Society news by reading their state organization/international newsletters or the *Bulletin* and/or don't use the available Society Web sites to seek information;
- Chapter members don't ask for help, being unwilling to admit or don't recognize that there is anything amiss.

We've always said that a member doesn't really understand the Society until she "goes beyond the chapter." Learning and getting excited about the full scope of the organization, with its many benefits of membership, is realized through networking with other members, fully participating in chapter activities, experiencing the organization beyond the chapter level so as to take advantage of benefits of membership, and being excited enough about our Society to want to become a leader and or mentor within the organization.

Does your chapter have one or more of the above "symptoms"? If so, don't let those symptoms continue!

- Contact your area/district director or state president and ask for help in turning your chapter into a vibrant, successful one that educators will be eager to join.
- Contact surrounding chapters to get successful ideas that your chapter can use.
- Check out the international Web site for program/project and membership ideas.

All chapters go through a natural cycle of "up" and "down" swings. If your chapter is in an "upswing," good



for you! Keep the momentum going, but reach out to the chapter near you that isn't doing as well right now. If, however, your chapter is in

a "downswing," do something before it becomes a disaster. If you don't step out beyond your chapter, you'll never know what wonderful things your chapter could be doing for your members, your community, and our world. You'll never go beyond Jack's Creek!

### 2010-2012 ADMINISTRATIVE BOARD

International President: Dr. Jensi Souders, Tennessee  
 First Vice President: Alice L. Carrier, Vermont  
 Second Vice President: Dr. Beverly Helms, Florida  
 Executive Director: Corlea S. Plowman, Texas  
 Society Headquarters

#### Regional Directors

Europe: Catherine York, Great Britain  
 Northeast: Dr. Lynda B. Schmid, Pennsylvania  
 Northwest: June Bowers, Nebraska  
 Southeast: Elizabeth N. Garner, Alabama  
 Southwest: Dr. Barbara Baethe, Texas

Immediate Past President: Dr. Carolyn Rants, Iowa  
 Members-at-Large

2008-2012: Carolyn H. Pittman, Arkansas  
 2010-2014: Jeannette Zuniga, Costa Rica

#### Area Representatives

Canada: Dr. Lace Marie Brogden, Saskatchewan  
 Latin America: Claudia Estrada, Guatemala  
 Parliamentarian: Jean Gray, Maryland

Find administrative board members' e-mail addresses at [www.dkg.org](http://www.dkg.org)

Toll-free phone: 888.762.4685

*DKG NEWS* (ISSN 0747-184X) is published by The Delta Kappa Gamma Society International bimonthly in January/February, March/April, May/June, July/August (online only), September/October, and November/December at 416 West Twelfth Street, Austin, TX 78701. Periodicals Postage paid at Austin, TX. Annual international membership dues include subscription to *DKG NEWS*. Send news items to Linda Eller, editor, at the address below.

POSTMASTER: Send address changes to *DKG NEWS*, P.O. Box 1589, Austin TX 78767-1589.

## Administrative Board makes decisions at meeting

During its November 15-17, 2010, meeting, the Administrative Board took the following actions:

- Continued to award CEU and professional development credits at \$45 for three CEU/30 hours and that Certificate of Attendance forms be provided at no cost for those requesting
- Clarified *Constitution* III, B. 1 to read: *An active member shall be a woman who is employed as a professional educator at the time of her election or has been retired from an educational position. An active member shall participate in the activities of the Society.*
- Gave permission to the Constitution Committee to sell the 2010 *Constitution and International Standing Rules* at all 2011 Regional Conferences at a price not to exceed \$3 per copy.
- Commended the 2010-2012 Educational Excellence Committee for promoting international projects, supporting early-career educators, and encouraging programs and activities that further educational excellence worldwide.
- Authorized a chapter honorary membership certificate.
- Approved the Building and Grounds Maintenance Schedule for 2010-2012.
- Approved the lists of vendors/exhibitors from each regional director and international for the 2011 Regional Conferences.
- Set a range of fees for vendors and exhibitors for the regional conferences:

#### Vendors

DKG Affiliate Vendor \$50-\$100

per table  
 Outside Vendor \$100-\$500 per table

#### Exhibitors

DKG Affiliate Vendor \$50-\$100 per table  
 Outside Vendor \$100-\$200 per table

- Agreed that Regional Directors may approve state and chapter vendors for their 2011 Regional Conferences.
- Changed wording of *Policy for Use of Electronic Communications* FROM  
*There must be no direct advertising solicitation (a one-sentence acknowledgement of donation of an electronic site is acceptable).*

#### TO

*Society Web sites will include no direct advertising except for International non-dues-revenue partnerships for fundraising by members that benefit the state or chapter organization. A one-sentence acknowledgement of donation of an electronic site is acceptable. (International non-dues-revenue partnerships include Society jeweler, insurance partners and approved international affiliates. Fundraising by members does not include third-party business agreements.)*

- Set early registration fee for members at \$95 for all 2011 Regional Conferences. Late registration fees are to be set at \$143 for members.
- Set the registration fee for a non-member guest at \$15 for all 2011 Regional Conferences.

- Set the one-day registration fee at \$40 and registration for non-member educators to attend the Educational Focus Seminar at \$30 for all 2011 Regional Conferences.
- Approved collection for the Emergency Fund by all 2011 Regional Conferences.
- Adopted the *International Guidelines for Sale of Items* (as rewritten). (Available online.)
- Decided to develop a document that includes all policies, duties and responsibilities of the Administrative Board.
- Will include in its policies that biennially the Administrative Board shall recommend to the Finance Committee an amount to be budgeted for use by the area representatives.
- Recommended that Finance Committee adjust the current budget and 2011-2012 Budget to include expenses associated with the duties of the 2010-2012 Area Representatives (Canada and Latin America) in an amount not to exceed \$2,500 per year per area.
- Will use the following definition in applying SR 4.13: natural disaster can be described as disasters that are not man-made. Natural disasters occur when forces of nature damage the environment and man-made structures.
- Will use the following definition in applying SR 4.13: a major political upheaval is defined as a disturbance usually in protest, a state of violent disturbance and disorder.
- Will use the following definition in applying SR 4:13: that the penalty exchange rates be defined as a negative differential of at least 25% between the monetary unit of the requesting state organization and the U.S. Dollar, lasting at least six months of the calendar year.

## DEADLINES

**February 1**-Scholarship Application

**February 1**-Lucile Cornet Award for Professional Development Application

**February 1**-Chapter President and Necrology Annual Reports

**March 1**-International Achievement Award Recommendation form

**March 1**-State Organization President and Necrology Annual Reports

## Members impact education

Typically the first question for a new International Membership Committee is: "What's the new membership campaign?"

*To realize our vision of being Key Women Educators Impacting Education Worldwide, we must help chapters become more successful in gaining and retaining members by appreciating the importance of every single Delta Kappa Gamma member.*

To that end the Membership Committee focus is

- Orientation and Re-Orientation to inspire sustained commitment to our Society
- Marketing the opportunities provided through DKG membership that will educate current members, attract new members and entice former members to reinstate.

For 2010-12 the "campaign challenge" is

- To take pride in an organization that supports excellence in education through projects at the local, state, and international levels
- To take pride in an organization that supports members with scholarships and professional development awards
- To take pride in an organization that builds leadership confidence and skills through professional education at the local, state and international levels
- To take pride in an organization that provides professional networking with key women educators.

Reduced to the basics, the campaign aim is to encourage all

members of all chapters to learn about the organization to which they belong.

The challenge is to find out about all the opportunities DKG has to offer at the chapter, state organization and international levels. Members can investigate and support Society projects including "Schools for Africa" and early-career educator support. Chapters can orient prospective members and re-orient members on the honor and benefits of DKG membership as well as membership responsibilities. Members can invite and involve non-members in chapter programs and encourage chapters to examine membership diversity in relation to all cultures, religions, ethnicities and levels of educational work and environments. Encourage your members to examine their own chapter culture to make certain that atmosphere supports the diversity to which we aspire; and finally, to encourage each chapter to develop an action plan which includes strategies for reaching these membership goals.

We must help each other understand that as DKG members, we are impacting education worldwide.

## Plans and procedures developed

Meeting in Austin in early December, a full agenda kept members of the Nominations Committee busy planning for regional workshops, reviewing and updating forms, reviewing constitutional changes and looking at state nomination committee practices. A long discussion centered around the use of electronics for the 2011 nomination process. "Selecting the best and most qualified leadership is the main goal for the Nominations

### Constitution and International Standing Rules 2010



Available beginning  
January 4, 2011

Get one for you  
and your officers!  
Committees too!

\$3 per individual  
copy  
\$12 for 5  
\$20 for 10  
\$55 for 30

Committee," Chair, Jean Fairbairn, OR, stated.

Workshops presented by the committee members at regional conferences will be geared to assisting members in using the international nomination process and becoming familiar with the newly created recommendation and endorsement forms. Attend a session to become informed and up-to-date.

Leadership is the capacity to translate vision into reality.  
- Warren G. Bennis

## Assignments announced for international representatives

A state organization may request an international representative assigned from the administrative board to attend a state meeting. During 2011 an international representative will visit the following state organizations:

- Alabama-Dr. Jensi P. Souders February 25-27, 2011
- Alaska-Sandra Smith Bull April 8-10, 2011
- Alberta-June M. Bowers May 6-8, 2011
- Arizona-Phyllis A. Hickey April 30-May 1, 2011
- Arkansas-Elizabeth N. Garner April 29-30, 2011
- Baja California-Carol Mueller November 12-13, 2011
- California-Carolyn H. Pittman April 29-May 1, 2011
- Colorado-Dr. Barbara J. Baethe April 29-May 1, 2011
- Costa Rica-Dr. Barbara J. Baethe April 2, 2011
- Delaware-Dr. Lynda B. Schmid May 7, 2011
- District of Columbia-Alice L. Carrier May 7, 2011
- El Salvador-Dr. Barbara Day May 20-22, 2011
- Estonia-Kate York March 5, 2011
- Finland-Carolyn H. Pittman February 5, 2011
- Florida-Dr. Beverly H. Helms April 29-May 1, 2011
- Georgia-Jean Gray March 25-27, 2011
- Germany-Kate York June 4-5, 2011
- Great Britain-Corlea S. Plowman April 9, 2011
- Hawaii-Dr. Beverly H. Helms April 8-9, 2011
- Iceland-Dr. Carolyn J. Rants May 6-8, 2011
- Idaho-Dr. Lynda B. Schmid June 15-17, 2011
- Illinois-Jean Gray April 8-10, 2011
- Indiana-Kate York April 29-May 1, 2011
- Iowa-Jeannette Zuniga June 10-12, 2011
- Kansas-Alice L. Carrier March 25-27, 2011
- Kentucky-Elizabeth N. Garner April 1-3, 2011
- Louisiana-Dr. Beverly H. Helms March 25-27, 2011
- Maine-Dr. Jensi P. Souders April 29-May 1, 2011
- Manitoba-Dr. Helen Popovich April 30, 2011
- Maryland-Corlea S. Plowman April 29-May 1, 2011
- Michigan-Dr. Jensi P. Souders April 15-17, 2011
- Minnesota-Dr. Carolyn J. Rants April 29-May 1, 2011
- Mississippi-Dr. Carolyn J. Rants March 31-April 2, 2011
- Missouri-Linda Eller April 15-17, 2011
- Montana-Carol Mueller April 29-May 1, 2011
- Nebraska-June M. Bowers April 29-May 1, 2011
- Nevada-Sandra Smith Bull April 1-2, 2011
- New Brunswick-Dr. Barbara Day April 29-30, 2011
- New Mexico-Evelyn Barron April 29-May 2, 2011
- New York-Linda Eller April 29-May 1, 2011
- North Carolina-Dr. Lacey Marie Brogden April 30-May 1, 2011
- North Dakota-June M. Bowers June 10-11, 2011
- Norway-Dr. Jensi P. Souders May 7-8, 2011
- Nuevo Leon-Dr. Lacey Marie Brogden April 2, 2011
- Ohio-Dr. Lynda B. Schmid April 1-3, 2011
- Oklahoma-Elizabeth N. Garner June 3-4, 2011
- Ontario-Sandra Smith Bull April 29-30, 2011
- Oregon-Claudia Maria Estrada April 15-17, 2011
- Panama-Dr. Jensi P. Souders November 20, 2010
- Pennsylvania-Dr. Beverly H. Helms June 10-12, 2011
- Puerto Rico-Dr. Lynda B. Schmid April 16, 2011
- Quebec-Dr. Lacey Marie Brogden May 6-7, 2011
- Saskatchewan-Jeannette Zuniga May 14, 2011
- South Carolina-Phyllis A. Hickey March 18-19, 2011
- South Dakota-Dr. Barbara J. Baethe June 3-4, 2011
- Sweden-Kate York April 9-10, 2011
- Tennessee-Corlea S. Plowman June 9-11, 2011
- Texas-Claudia Maria Estrada June 23-25, 2011
- Vermont-Alice L. Carrier April 30, 2011
- Virginia-Jean Gray April 29-May 1, 2011
- Washington-Alice L. Carrier April 1-3, 2011
- Wisconsin-Carolyn H. Pittman April 8-10, 2011
- Wyoming-Jacklynn Cuppy April 28-May 1, 2011

## 2011 Regional Conferences

### Southwest Regional heads to Denver, Colorado

Venture to the Mile High City, June 26-July 2, 2011, for the Southwest Regional Conference at the Hyatt Regency Tech Center. An outstanding list of speakers and programs have been created as part of the conference offerings.

The first general session opens the conference with the presentation of state banners, inspirational thoughts, words from International Executive Director, Corlea Plowman, and Colorado Night, highlighting the rich history, varied culture and talents from the state.

Thursday will be open to non-members who would be interested in participating in the education focus day. The day begins with Carlotta LaNier sharing *A Long Way From Little Rock High*, followed with breakout sessions on diversity. Other conference speakers include Amy Baldwin presenting, *Engagement to*



Enjoy great views from the Hyatt Regency Tech Center.

*Commitment*, a group of high school students performing *No Room For Hate*, and culminating in a dialogue with a panel of professionals on bullying. The conference provides Society sessions, professional development offerings, special interest breakout sessions, an Info Fair and a Vendor/Exhibitor Market.

The Birthday Luncheon will include greetings, the conference chorus and a style show of Colorado members modeling apparel from Cold Water Creek. During the state breakfast time, enjoy fellowship, great music and the Emergency Fund updates. Plan to attend a Night-on-the-Town event.

Dr. Jensi Souders, international president, will bring the final message at the Presidents' Banquet. The conference chorus and a New York artist will perform.

### Gallop to Louisville in 2011

One of the most pertinent issues facing today's students and educators stems from bullying and sexting. A special two-hour seminar open to members and non-members will be offered as part of the 2011 Southeast Regional Conference. If you know non-members who would benefit from this timely seminar, invite them to register and attend.

Come early to participate in the exciting scheduled tours. Fourth Street Live and Museum Row will offer shops, restaurants and the beautiful new Yum Center. Take a stroll along the waterfront and see how many painted horses can be located throughout the city. Try to catch a streetcar for a unique riding tour.

The conference site, the Marriott Louisville Downtown, connects venues of entertainment by an enclosed lighted walkway. The hotel offers the famous BLU Italian Grill and the



Gather at the Marriott Louisville Downtown for fun and festivities.

casual Champions Restaurant or Starbucks off the lobby.

Join an evening of tasty desserts and lively Kentucky entertainment on Wednesday night. Meet members in the Marriott Ballroom to experience Kentucky Night.

Bring your taste buds to Louisville. The conference meals will include delectable Kentucky favorites. Participate in the Hat and Glove Luncheon to celebrate a "traditional" DKG birthday. Support new state presidents by attending the Presidents' Banquet.

Southeast Regional Director Elizabeth Garner, Conference Chair Susan Cross, the conference steering committee and all of Alpha Gamma State organization members have been hard at work planning an exciting week. Catch a plane for a short flight or bring members in a state bus. Regardless of the mode of travel, just come and join us.

### Smell the sweet aromas in Pennsylvania

Imagine a place where all the human senses converge into one delectable experience. Taste the creamy smoothness of candies that melt in the mouth. Feel the welcome atmosphere. These and many other adventures await all who attend the 2011 Northeast Regional Conference in Hershey, Pennsylvania, July 20-23, 2011.

Deluxe accommodations will be available through The Hershey Lodge and Convention Center. Rooms are large and comfortable with all the amenities. Family activities abound at the Lodge and in the surrounding areas. World-class restaurants provide cuisine from around the world.

Come and experience the best food and fare the Keystone State has to offer, on Wednesday, July 20. From pierogies to pretzels, meatballs

to whoopee pies, Pennsylvania Night promises a "delicious taste of Pennsylvania."

Kate Campbell Stevenson will present a historical performance portraying women who held fast to their dreams and provided positive, courageous role models. Rebecca Pringle, Secretary-Treasurer of the National Education Association, will share her vast experiences as an educator with 31 years of classroom experience and how her leadership vision has impacted diversity issues, student achievement, and developing leaders with the NEA. Anne F. Beiler, founder of Auntie Anne's Pretzels, will share her personal vision and how it grew into an international endeavor.

A vast array of breakout sessions awaits participants. Trying to select a workshop in each time slot will be a sweet dilemma. One day the majority of workshops will focus on "Education in the Digital Arena." Come and learn how "new technologies" will assist in designing the future.



Hershey, the chocolate capital, beckons all.

### Edmonton eagerly awaits members in 2011

Zeta Province, Alberta, will welcome Delta Kappa Gamma members and families to a unique experience—a conference site that will stimulate your mind, be kind to your body, satisfy your recreation needs, tempt your shopping gene, provide a variety of eateries to tantalize any taste buds, and keep you involved.

The Fantasyland Hotel in Edmonton is located within West Edmonton Mall, all under one gigantic roof. Have a look at [www.wem.ca](http://www.wem.ca).

For those flying into Edmonton, an Airbus will whisk you to the hotel at a fair price. If arriving by car, hotel parking is free.

Along with leadership sessions for state organization leaders, the focus on Thursday will be mentoring, including a general session for all and breakout sessions for early-career teachers, active teachers and retired teachers. Saturday brings a panel discussion on Dwindling Resources. A serious panel discussion with an environmentalist, an oil company spokesman and a government official focusing on what we can do to reduce our footprint while fulfilling our needs rounds out the day.

The conference takes place on one floor of the Fantasyland Hotel. Guards patrol the hotel and mall,



Fantasyland Mall hosts the Northwest Regional Conference with something for everyone.

and access to accommodations is via an elevator activated only by room keys. The Mall features a gigantic swimming pool and more.

Join us for a stimulating, relaxing, educational and carefree week. By the time you get here, Zeta Province and our Northwest Regional Director, June Bowers, will have not only you, but the conference planning covered.

### Embracing Excellence and Designing Our Future in Baden-Baden, Germany

The Black Forest region of Germany boasts outstanding scenery, splendid historic towns and villages, and world-famous gastronomy. Come to Baden-Baden, an elegant spa town in the Rhine Valley at the foot of the Black Forest, for the European Regional Conference August 3-6.

The surrounding area offers many opportunities for learning – history, culture, arts and crafts. Night on the Town in Baden-Baden takes members to supper at the famous Kurhaus.

The Rhine Valley grows some of the best German wines, and you can be the judge on Baden-Baden Night. Tours tout Baden-Baden's

culinary traditions, including the famous Schwarzwälder Kirschtorte (Black Forest Gateau) and traditional beer brewing handed down by local monasteries.

Other tours will showcase the 'treasures' of the Black Forest, including Freiburg, an old university city with one of the world's most beautiful Gothic cathedrals; Strasbourg with splendid old timber-framed houses lining the cobbled streets around the cathedral; Heidelberg – an old university town

with famous castles; a five-day Rhine cruise or a tour of Bavarian Kings' Castles can extend your stay.

Thursday will be an educational focus day, including keynote speeches by international presenters on current issues in education, with related workshops and sessions open to members and non-members.

Accommodations will be in single or twin-bed rooms at our college venue, or in nearby guest houses/hotels where we have block bookings.



The countryside of Baden-Baden awaits all who attend.

## Recipients announced for 2010-2011

The International World Fellowship Committee announces the 2010-2011 recipients of the U.S. \$4,000 grants for graduate study at universities in Canada and the United States. Below is each recipient's name, home country, major area of study and university.

### Recipients

- Fatima Al Sayah, Lebanon, Nursing, University of Alberta
- Loreto Barcos, Chile, Astronomy, University of Virginia
- Ece Basaran, Turkey, Law, New York University
- Maria Del Pilar Camargo Plazas, Colombia, Nursing, University of Alberta
- Jenny Carstens, Germany, Psychology, University of Windsor
- Maria Chaparro, Colombia, Developmental Psychology, University of Toronto
- Julia Costa Lopez, Spain, International Studies, University of Denver
- Karen Cresci, Argentina, Comparative Literature, New York University
- Maria Davila, Ecuador, Music Performance, Western Michigan University
- Denise Dvorquez, Ecuador, Public Health, John Hopkins University
- Alexandra Kuvaeva, Russia, Education, University of Maryland
- Magdaleen Corne Lotter, South Africa, Education, Michigan State University
- Trang Nguyen, Vietnam, Special Education, University of Oregon
- Janet Okoko, Kenya, Educational Leadership, University of Calgary
- Edna Pierre, Haiti, Public Health, Tulane University
- Darussanee Potaros, Thailand, Nursing, University of Alberta

- Emily Sanchez Salcedo, Philippines, Law, Indiana University
- Claudia Torres, Honduras, Education, University of Texas
- Ana Williams, Nicaragua, Public Health, University of Illinois at Chicago
- Yulianti, Indonesia, Public Affairs, Indiana University

### Extensions

- Nongnuch Athiphunamphai, Thailand, Food Science, Cornell University
- Paola Calvasina, Brazil, Dental Public Health, University of Toronto
- Winifrida Kidima, Tanzania, Tropical Medicine, University of Hawaii
- Karla Jael Sanchez Toral, Mexico, Deaf Education, Gallaudet University
- Witriani Soegijardjo, Indonesia, Educational Psychology, University of Missouri at Columbia



Dr. Souders poses with a 2010-2011 World Fellowship recipient Claudia Torres

## Upcoming CTAUN Conferences

Friday, January 14, 2011

"Achieving the Millennium Development Goals: Teaching for Action"

United Nations, New York City

Saturday, February 5, 2011

"Teaching for Action: The United Nations as a Resource"

Georgia State University, Atlanta, Georgia

## CTAUN conference comes to Texas

Austin beckons educators and concerned citizens to attend the April 2, 2011, CTAUN conference, Global-Local Partnerships for 21st Century: A UN Collaborative. CTAUN is the Committee on Teaching about the United Nations and will be hosted at the LBJ Library Auditorium at the University of Texas.

Guest speakers from the United Nations and local experts will participate in keynote addresses, panel discussions and offer workshops on social justice, sustainability, and current educational trends. The conference, scheduled from 9 a.m. to 4 p.m. offers a variety of professional and personal learning venues. Registration begins in January 2011. For more details visit [www.teachun.org](http://www.teachun.org)

## International Speakers to visit Maine and Costa Rica!

This year, the International Speakers Fund (ISF) is pleased to grant requests for speakers to two state organizations. Canadian member Carolyn King Calgary, Alberta, will visit Maine, in the United States, and Luz Maria Padilla Castillo of Puebla, Mexico, will speak in Costa Rica.

Established in 1982 to celebrate the Society's 30th anniversary as an international organization, the mission of the ISF is to increase global understanding by providing speakers to state organizations in countries other than the speaker's own. Each year, members may apply to be a speaker for a two-year period, after which, they may re-apply.

How does a state organization get an international speaker? State organizations can consult the speakers' bank to learn more about speakers and presentation topics and then apply for a speaker through the ISF. The fund

## Broadcasting the Buzz

*Broadcasting the Buzz* serves as the theme for the International Communications and Publicity Committee.

*Tip of the Month* focuses on helping members find ways to broadcast happenings to members and non-members about Society news.

Many ideas included in the *Buzz* may generate chapter activities, programs or projects. Committee members seek input from all with ideas to share. Visit the DKGnetwork and join the **Broadcast the Buzz Group** to learn about exciting activities across state organizations.

Join us in Broadcasting the Buzz.

pays travel expenses. The hosting state organization pays for the speaker's costs while in the host country.

The members of this biennium's ISF Committee have adopted a proactive approach toward increasing the principal of the ISF – and the visibility of the fund! A change designed to increase visibility of the fund is the addition of a second application date for state organizations who may now apply in May or November. To learn more about the ISF, check out the library section of the Society Web site. Plan to visit an Info Fair booth or ISF workshop at a 2011 Regional Conference, or contact one of the committee members. Remember that the next application date for a speaker is May 10, 2011.

## Looking ahead in leadership

Excitement is building and plans are "heating up" as the Leadership Development Committee prepares for the 2011 regional trainings for new state leaders. "Embracing Our Vision, Designing Our Future," the 2010-2012 biennium theme, will also serve as the theme of the summer trainings. In making this decision, committee members wish to reinforce a continued focus on our Society's vision, strengthening of chapters, and mentoring of early-career educators.

These sessions are important opportunities for new state leaders to meet and interact with their peers from the region as they participate in activities designed to give them the tools to lead effectively and inspire future leaders in their home states. Leaders will define their own visions for their states and address strategic action planning as a means of carrying out those visions. Decision-making

Congratulations to Sweden and Iceland on their new chapters!



Sweden celebrated the installation of Lambda Chapter in Karlstad October 21, 2010, with 12 new members.



In October Iceland installed Lambda Chapter in the region around Reykjavik, the new chapter has 26 members.

scenarios will provide meaningful discussion and result in a variety of ideas for offering assistance to chapters. If this sounds very serious, don't worry. We expect many moments of fun and laughter along the way.

The Leadership Development Committee has already begun collaboration with the committees for Membership and Educational Excellence to design a unified effort to support our chapters throughout the Society. One project from this collaboration is a "Blueprint for Developing Chapter Leaders" that the committee will include in this summer's trainings.

Please visit the Society Web site to find more recommendations for leadership resources or feel free to contact any member of the Leadership Development Committee for assistance. We look forward to hearing from you.

## Seek excellence in education

The room buzzed with excitement as the 15 members of the new Educational Excellence Committee met for the first time to build on the wisdom of the past as it charted its new course.

Focusing on the Society's mission and vision statements, the committee adopted a self-definition, which will be equally appropriate for state organization and chapter committees: *The Educational Excellence Committee promotes international projects, supports early-career educators, and encourages programs and activities that further educational excellence worldwide.*

For the Society to have the greatest impact on education, chapters and state organizations need to focus on no more than two Society-wide initiatives. In addition, chapters and state organizations will benefit from resources for programs and activities that encourage educational excellence by addressing the professional and personal growth of women educators and the diverse interests of members.

To embrace our vision, *Leading Women Educators Impacting Education Worldwide*, the Educational Excellence Committee urges every chapter and state organization throughout the Society to focus on two major initiatives:

- Support for the Society's official Schools for Africa project, and
- Support for early-career educators.

Information on these initiatives is readily available on the DKG Web site and in its publications. UNICEF will maintain records of DKG's support for the Schools for Africa project.

Chapters should maintain a record of the money and the number of hours members spend in support for early-career educators. Recognition for support of both initiatives will be showcased at the 2012 convention.

To assist chapters, the Educational Excellence Committee will use the DKG Web site library, the DKGNetwork and Society publications to offer ideas for programs and activities that focus on educational excellence, promote the DKG/UN relationship, increase members' global awareness, impact educational law and policy, and increase members' personal and professional pride.

Join the excitement! Unite with other Delta Kappa Gamma members as we become a global force in achieving educational excellence.



## Educational Foundation Impacts Education Worldwide

How does the DKG Educational Foundation impact education worldwide? The Foundation gives Cornet Seminar Awards.

DKG members and non-member educators will benefit from seminars this year thanks to the Lucile Cornet Seminar Awards given recently by the Educational Foundation. These awards, totaling \$10,000, were given to seven state organizations or other entities of the Society.

Open to non-member educators, funded seminars include CTAUN's Global Partnerships for the 21st Century to be held in Austin, TX; a video-conference seminar on research-based instructional strategies at 11 locations in North Carolina; a focus seminar on bullying at the 2011 Southeast Regional Conference; a vision seminar in New Mexico; a leadership seminar in Ohio; a seminar focusing on difficult students at the 2011 Europe Regional Conference; and a women educators' leadership workshop in Michigan.

Imagine the impact that these seven seminars will have on DKG members and other educators who attend. Leadership, special needs students, bullying, global partnerships, and instructional strategies ... powerful topics ... sure to impact education in the most positive ways!

## Update, renovate and communicate

By Corlea S. Plowman  
EXECUTIVE DIRECTOR

I live in a neat old Craftsman house, built about 1915 by a man who owned a local lumberyard. The oak and pine shine with the rich patina that only comes with age and loving use. Ceilings reach 10 feet downstairs and nine feet upstairs. The finished basement (complete with 1950's bomb shelter) stops just short of eight feet.

The doors are all trapezoidal... the ground shifts in Texas. The back door that required a shoulder or full body attack to open this summer now pops open if the lock is not bolted. The building shifts with the weather, mainly the rain or lack thereof. This house is warm, comfortable and inviting. I can tell what is going on by the stair squeaks or door noises. The house has its own kind of communication system.

So what's the point? I feel the same way about our Society... warm, comfortable, inviting. But we're shifting with the "weather" and adjusting "doors." We are adapting.

My husband and I added a large modern bathroom to our house several years ago. This update gave us three bedrooms and three bathrooms upstairs. It's great for guests and family. The Society has updated also.

New logo, fresh looks in printed materials, revised *Constitution* and *International Standing Rules*, positive leadership and interesting ideas challenge us to rise to the

accomplishments we see around us. Updated, renovated, fresh...for 2011 and beyond.

Delta Kappa Gamma has had a face lift of sorts. Our spirits are definitely lifted and rejuvenated. Our mission and our vision are relevant today and for the future. It's refreshing to see and hear members in their chapter meetings as they mix old and new, young and not-so-young, tradition and modern.

We may not be changing as fast as Microsoft or Apple. We may not be upgrading as quickly as Verizon, AT&T or Sprint, but we are moving right along. We're faster than much of the building or renovations of the housing market.

Our DKG 8.4 version (80+ years, updated) shines as an example of expertise in education, a support for early-educators, professionalism and, yes, genuine spiritual fellowship. Many chapters are responding to activities and programs that strengthen their membership. State organizations are challenging members to make a difference in their communities and their states, provinces and countries. International boards and committees are providing materials, supporting ideas and a framework of information to continue the updates.

DKG 8.4 has more than fresh paint or a new room. DKG 8.4 has you! Make the most of your membership by participating, leading and sharing.

### Remember...

### International Scholarship Application

Deadline  
February 1, 2011

Apply today!

Application at [www.dkg.org](http://www.dkg.org)

## Updated guidelines available

Do you know that the 2010 Guidelines for Chapter Presidents and Treasurers are available from Society Headquarters? Order from the shopping area of the DKG Web site. Guidelines for State Organization and Chapter Communications Chairs and Membership Chairs have updated versions, too.

Each Guidelines booklet provides information to assist in carrying out an assigned role as well as historical facts about Delta Kappa Gamma. Use these guides as a handy resource when questions occur.

A copy of the Guidelines is available for \$2 from the international supply store at [www.dkg.org/shopping/](http://www.dkg.org/shopping/) or you may print an order form from the forms section and mail your order. Copies ordered online will be delivered in a matter of days. Order your copy today.

The most important idea concerning change is that we have to change twice. Not only do we have to change things, but we have to change the way we see things.

-Luc De Branbandere

Do you need money for professional development?

### Lucile Cornet Professional Development Awards

Available to assist you this year

**Apply Now!**

Up to \$2,000 per Award

**February, May and September deadlines**



"The conference I attended was a valuable opportunity to better understand 21st century learners as well as to better appreciate the implications of expanding technology use for students, teachers and libraries. I am most grateful for this opportunity provided by my Lucile Cornet Award."

Patricia G. Bologna, Alpha Upsilon state organization, Massachusetts

**The Delta Kappa Gamma Educational Foundation**

[www.educatoredge.org](http://www.educatoredge.org)

[www.dkg.org](http://www.dkg.org)

INTERNATIONAL ▪ UPDATE

# Europe is embracing the DKG vision and designing its future

## The European Forum

The European Forum met in Freudenstadt, Germany, November 5-6, hosted by Christa Dunker-Hopferwieser, Germany, and led by Heli Piikkilä, Finland. The members of the committee covered a very full agenda. Plans were made for a seminar to be offered on August 2, 2011, prior to the European Regional Conference to focus on Educational Challenges in the 21st Century. The committee also decided to invite all European member countries to unite in celebrating World Teachers' Day in October 2011 as a project in which all members can share. Read the

full minutes of the meeting at [www.dkgeurope.org](http://www.dkgeurope.org). Next November the meeting will be held near Aalborg, Denmark.

### New Web site

We are delighted to see that Denmark has a new Web site – this can easily be accessed through the weblink above to the European Web site.



Members of the European Forum smile when their meeting had ended successfully

### State Meetings

All European states are pleased to welcome DKG members from other countries to their annual meetings.

Dates so far for 2011 are:

February 8 – Finland

March 5 – Estonia

April 6-8 – Iceland

8-10 – Sweden

9 – Great Britain

May 7-8 – Norway

May 14 – The Netherlands

June 4-5 – Germany

Europe is certainly designing its future.

### 2011 Regional Conference

The Steering Committee, led by Brigitte Wichmann, met in central Germany at Fulda. Members in Germany are working hard to provide a fabulous experience.

This column is submitted on a rotating basis by the Europe regional director and the area representatives for Canada and Latin America.

Celebrate what you want to see more of.  
-Tom Peters

No. The Executive Board will recommend what the dues should be. Only the convention can decide the actual amount of dues. That means when the Executive Board's recommendation is presented to the convention, the amount may be totally rejected, amended to a greater increase (maximum=COLA), or amended to a lesser increase.

Is it true that the International Executive Board now decides the amount of international dues?

Potential members come from two groups: (1) Women presently contracted as professional educators; (2) Women who are retired professional educators. Women who are not presently employed as professional educators or who left the profession before retirement are not eligible.

A dear friend taught for four years while completing her certification as a lawyer. She has spent the last 22 years serving as a defender in family court. Is she now eligible for invitation to membership?

Periodicals  
Postage  
PAID  
Austin TX USA

The Delta Kappa Gamma Society International (USPS 715-830)  
P.O. Box 1589, Austin, TX 78767-1589 USA

